

LAMPWORKING EQUIPMENT



V-SHAPED:



V-SHAPED BIG HOLDER



V-SHAPED MEDIUM HOLDER



V-SHAPED SMALL HOLDER



V-SHAPED THREE ROD



TWEEZERS "MOLLETTA"



WIRE HOLDER OF COPPER:

CLIP-STYLE WIRE HOLDER EARING



hole \varnothing 3 mm

WIRE HOLDER



hole \varnothing 2 mm



BLOWPIPE WITH CARBON STEEL NOZZLE:

\varnothing Pipe x \varnothing Tube

BIG (\varnothing 14x \varnothing 10 mm)



MEDIUM (\varnothing 12x \varnothing 8 mm)



SMALL (\varnothing 10x \varnothing 6 mm)



IGOR



\varnothing 18x \varnothing 8
 \varnothing 16x \varnothing 8 countersunk hole

HOLLOW BEADS MANDRELS



\varnothing 2,5 – \varnothing 3,0 – \varnothing 4,0 mm

WITHOUT HEAD (\varnothing 2,5 – \varnothing 3,0 – \varnothing 4,0 mm)

FINE TWEEZERS:



FINE TWEEZERS EVERY SIZES



180-200-230 mm

WITH TUNGSTEN TIPS



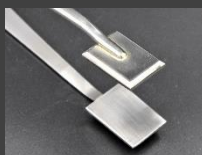
Tip diameters:
 $\varnothing 1,6 / \varnothing 2,0 / \varnothing 2,4 / \varnothing 3,2$ mm

ROSES



24x12 – 15x8 mm

FLAT



27x17 mm

RIBBED MASHER STAINLESS STEEL



27x17 mm

RIBBED MASHER BRASS



27x17 mm

LEAF STAINLESS STEEL



27x17 mm

LEAF BRASS



27x17 mm

WAFFLE STAINLESS STEEL

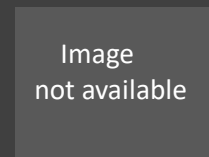


Image
not available

27x17 mm

WAFFLE BRASS



27x17 mm

DRAGON WINGS



40x9-5,5 mm

COPPO



40x10,5-7 mm

DROP SMALL



14x8 mm

DROP BIG



23x9 mm

HEART



8-10 mm
12 mm

SHELL



10 mm

SPOON



$\varnothing 16 \times 5 - \varnothing 19 \times 6$

LADYBUG



11x10

LAMPWORKING TWEEZERS:



BIRD WINGS



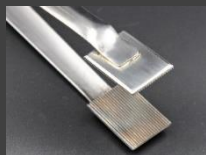
Big
Small

FLAT MASCHERS



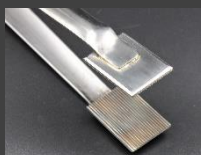
30x40 – 40x50 mm

LEAF



30 x 40 mm

RIBBED MASHER



30x30 – 30x40

WAFFLE

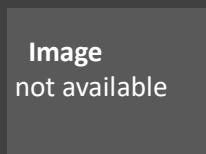


Image
not available

30x40 mm

DRAWN LEAVES

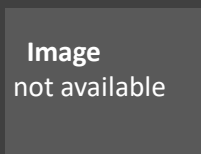


Image
not available

30x40 mm

PARRAMORE ROSES

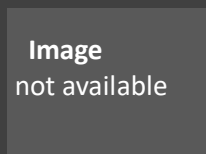


Image
not available

Special steel handle

BEADS TWEEZERS:

BELLFLOWER



	Ø8	Ø10	Ø12	Ø14	Ø16	Ø20
5 Petals	v	v	v	v	v	v
6 Petals			v	v	v	v
8 Petals						v

HEART on FINE TWEEZER



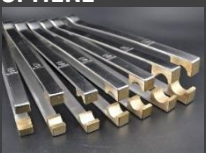
8x8x6
10x10x7,5
12x12x8

HEART



14x14x8,5
15x15x9
18x18x12
20x20x13
21x22x13
22x23x13
25x25x14
28x30x17
29x29x17
29x30x17
30x31x17,5
32x35x18
34x37x21
36x35x20
36x39x21

SPHERE



Ø6	Ø14	Ø22
Ø8	Ø16	Ø24
Ø10	Ø18	Ø25
Ø12	Ø20	Ø26



LENTIL



Ø12x6
Ø14x7
Ø16x8
Ø20x10

Ø25x12
Ø30x14
Ø35x15
Ø40x16

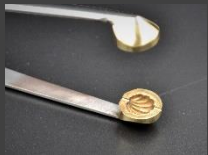
Ø45x17
Ø50x18

OVAL



14x9,6
20x12
27x16
34x20

SHELL on FINE TWEEZER



10x6
12x7,2

SHELL



15x8,5
20x10
25x11

30x12
35x14,5
43x17

BUTTERFLY PRESS FLAT & BENT



35x25 mm

TURTLE



30x23

SKULL 3D



18x13x16
22x15x21

BUTTERFLY WING



28x16

ANGEL WING



35x15

FISH



32x18

PANDORA



BICONE



CILINDER



CUBE PRESS (with extractor system)



SAIL



STAR PRESS



MOON

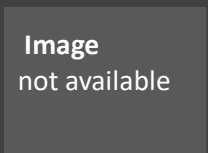


Image
not available

PRESS EXTRACTOR SYSTEM Estimate

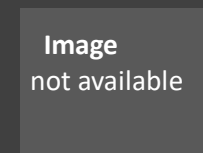


Image
not available

TUGSTEN NEEDLES



Needles:
Ø2,0 - Ø2,4
Ø3,2

BUTTONS



Ø15 - Ø18 - Ø20 - Ø22 - Ø23
Ø26 - Ø28 - Ø35

ROD PREHEATING STAND



PREHEATING ROD STAND SMALL



With standard base
With designed base

PREHEATING ROD STAND BIG



With standard base
With designed base

BENCH ROLLER



With standard base
With designed base

STANDARD BASE



BUTTERFLY BASE 1



BUTTERFLY BASE 2



FLAME BASE



LION BASE



RAGGIERE LAMPWORKING:

SMALLER 8 blades Ø15x30



SMALL 8 blades Ø20x35



MEDIUM 8 blades Ø25x55



BIG 12 blades Ø30x68



JACK REVERE (blades 110mm)



JACK FUIN (blades 160mm)



FLAME BEADS JACK SPECIAL STEEL (blades 47mm)



PACIOFFI GRAPHITE BLADES

PACIOFFI CESARE GRAPHITE BLADES



GRAPHITE PADDLE:

100X70 mm (Stronger)



60X80 mm



40X60 mm



RING MANDRIL:

in STAINLESS STEEL



ROUNDED

15-16-17-18-19-20-21-22 mm

Image
not available

SQUARED

10 – 15 – 20 mm



BRASS CYLINDERS SUPPORT (16\17\18\19\20 mm)



FLAME SET + CILINDERS



CYLINDER ONLY

STAINLESS STEEL MANDRELS (1,2-1,6-2,0-2,4-3,2 mm)

TWO FINGERS



HOTFINGERS



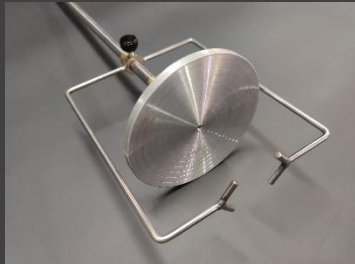
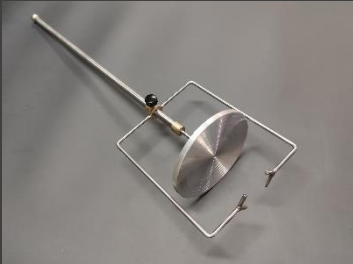
BLOWING GRAPPER



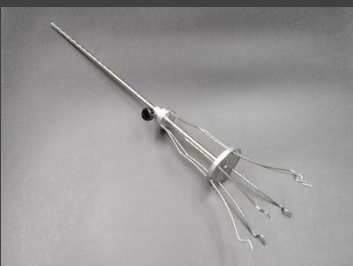
GRAPPER



BLOWING GRAPPER "FORK"



BLOWING GRAPPER FOR GLASSES



TORCHES (Support and marvel included)

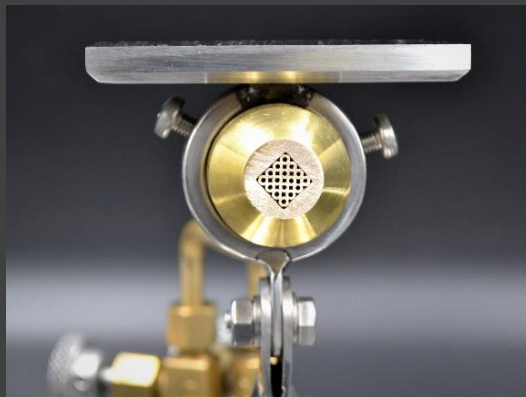


FLAMES NUMBER:

- 6
- 9
- 12
- 15
- 19
- 25
- 36
- 64



25 Flames



25 Flames



6 – 9 Flames



6 Flames



9 Flames

FURNACE TOOLS TWEEZER



CONVEX TWEEZERS:

EXTRA BIG (360\400\450\500 mm)
BIG (330 mm)
MEDIUM (310 mm)
SMALL (260 mm)
SMALLER (220 mm)

FLAT TWEEZERS:

EXTRA BIG (360\400\450\500 mm)
BIG (330 mm)
MEDIUM (310 mm)
SMALL (260 mm)
SMALLER (220 mm)

PACIOFFO:

(Rods in graphite, wood, teflon)

BIG ROUND (50 mm HANDLE)
SQUARED HANDLE
GRAPHITE STICKS

MEDIUM ROUND (45 mm HANDLE)
SQUARED HANDLE
GRAPHITE STICKS

SMALL ROUND (40 mm HANDLE)
SQUARED HANDLE
GRAPHITE STICKS

SMALL CUP VERSION GRAPHITE STICKS
SMALL CUP VERSION STICKS BLADES
MEDIUM GRAPHITE STICKS
MEDIUM GRAPHITE BLADES



Squared handle

LIPPING TOOL for BOTTLE NECK (Estimate)



JACKS



Blade sections (indicative):

- Jacks
- Caramèa
- Revere
- Fuin



- Cup



- Mandolino



- Round
- Avolio



JACK:

BIG (blades 270\300 mm)
(SPECIAL STEEL)

MEDIUM (blades 240 mm)
(SPECIAL STEEL)

SMALL (blades 190\210 mm)
(SPECIAL STEEL)

CUP JACK:

BIG (blades 270\300 mm)
(SPECIAL STEEL)

FABIANO AMADI (blades 300 mm)

MEDIUM (blades 240 mm)
(SPECIAL STEEL)

SMALL (blades 190\210 mm)
(SPECIAL STEEL)

CARAMEA JACK (160\190 mm) (blades 160\190 mm)

REVERE SPECIAL JACK
(short and light jack) (110 mm)

JACK FUIN (blades 160 mm)

ROUND JACK:

BIG (blades 270\300 mm)

MEDIUM (blades 210/240 mm)

SMALL (blades 200 mm)

AVOLIO JACK (blades 160x3 mm)

MANDOLINO JACK:

BIG (blades 270\300 mm)

MEDIUM (blades 210/240 mm)

SMALL (blades 200 mm)



Revere special Jack



Jack Fuin



Avolio jack

BEND & STRAIGHT PUFFER



Standard sizes

Tube Length 400 x Ø 10 mm, price included
custom sizes on request



CONI MEASURES:



Ø70xh85 mm



Ø80xh90 mm



Ø85xh70 mm



Ø100xh85 mm



Ø135xh100 mm



Wide mouthpiece to
improve blowing



LINO'S PUFFER BEND & STRAIGHT

Tube Length 350 x Ø 8 mm

Cone Ø 45 x h 52 mm

Small mouthpiece

AIR GUN PUFFER

With cone Ø 150 mm

Tube Length 230 x Ø 8 mm



TAGLIOL wooden & steel handle:

PINO'S	BIG	290x60 mm
	SMALL	220x50 mm
SQUARED	BIG	240x60 mm
	SMALL	210x50 mm



Different sizes by request

COPPO:

EXTRA BIG
BIG
MEDIUM
SMALL



SPECIAL TWEEZERS CUSTOMIZED MEASURES



CONVEX TWEEZERS:

DRAGON WINGS	v	BIG	v
ELIO'S DRAGON WINGS	v		
COPPO	v		
CONES	v		
SPOONS	v	v	v
WAFFLE	v	v	v
FLAT NARROW AND WIDE	v	v	v
FLAT ANGLE	v	v	v
PRUNTS MORISE	v	v	v
EYES	v	v	v
NARROW AND WIDE LINES	v	v	v
LINES-GATOI (three big tooth)	v		
RIBBED MASHER for chandelier (80x200 mm)		v	
ROSES PETAL (small & big)	v	v	v
ELIO ROSE (Big plates)	v	v	v
PARRAMORE ROSES	v		
LEAF			



Dragon wings



Elio's dragon wings



Coppo



Leaf



Prunt Morise

SET (5pz) Special small crimps
for MORISE -FLAT-LINES-LEAF AND PRUNTS (230 mm)

Different sizes on request



Roses petal



Narrow lines



Flat



Flat angle



Spoons



Eyes

TUGSTEN NEEDLES

(to make holes)

Needles Ø 1,6 / 2,0 / 2,4 / 3,2 mm



FURNACE SHEARS



THIN STRAIGHT SHEAR:

- 40 mm
- 50 mm
- 60 mm
- 40 mm (Lampworking)
- 50 mm (Lampworking)
- 60 mm (Lampworking)



50 mm (Lampworking)



60 mm (Lampworking)

STRAIGHT SHEAR:

- 70 mm
- 80 mm
- 100 mm
- 120 mm
- 140 mm
- 160 mm
- 180 mm
- 200 mm



120 mm



160 mm



200 mm

DUCK BILL:

- 50 mm
- 80 mm
- 95 mm
- 130 mm





DIAMOND SHEAR:

60 mm (Lampworking)
80 mm
95 mm
95 mm (New model)
110 mm
130 mm



60 mm (Lampworking)



80 mm



95 mm



95 mm (new model)



110 mm



130 mm

BLOWPIPES

Ø Tube x Ø Pipe mm

10X20 mm

14X22 mm

14X25 mm

14X28 mm

14X30 mm



Ø14



Ø17

17X25 mm

17X28 mm

17X30 mm

17X35 mm

21X30 mm

21X35 mm

21X40 mm

21X45 mm



Ø21



Rifled handle

25X40 mm

25X45 mm

25X50 mm

27X40 mm

27X45 mm

27X50 mm



Rubber handle

33x40 mm

33X50 mm

33X60 mm

SUBSTITUTION HEAD

	310 Steel Head	Iron
20 mm	v	v
22 mm	v	v
25 mm	v	v
28 mm	v	v
30 mm	v	v
35 mm	v	v
40 mm	v	
45 mm	v	
50 mm	v	
60 mm	v	

SUBSTITUTION PIPE SUPPORT

RUBBER HANDLE

STAINLESS HANDROAD WITH HANDLE

8 mm
10 mm
12 mm
14 mm



Stainless handroad with handle

PUNTY WITH or WITHOUT HANDLE

Ø Tube x Ø Pipe mm

Punty without handle Punty with handle

14x22 mm	v	v
14x25 mm	v	v
14x28 mm	v	v
14x30 mm	v	
17x17 mm	v	v
17x20 mm	v	
17x25 mm	v	v
17x28 mm	v	v
17x30 mm	v	v
17x35 mm	v	v
21x22 mm	v	v
21x25 mm	v	
21x28 mm	v	v
21x30 mm	v	v
21x35 mm	v	v
21x40 mm		v
25x25 mm		v
25x30 mm	v	v
25x35 mm	v	v
25x40 mm	v	v
27x35 mm		v
27x40 mm	v	v
27x50 mm	v	v
33x35 mm		v
33x40 mm	v	v
33x50 mm	v	v
33x60 mm	v	v



Punty with handle

OPTICAL MOLDS



Internal measurements \varnothing x h indicative

12 POINT

\varnothing 15x25 mm
 \varnothing 42x70 mm
 \varnothing 55x100 mm
 \varnothing 55x140 mm
 \varnothing 65x120 mm
 \varnothing 70x170 mm
 \varnothing 110x200 mm
 \varnothing 150x220 mm
 \varnothing 160x240 mm

16 POINT

\varnothing 15x25 mm
 \varnothing 20x35 mm
 \varnothing 25x35 mm
 \varnothing 30x55 mm
 \varnothing 35x40 mm
 \varnothing 35x45 mm
 \varnothing 35x55 mm
 \varnothing 35x65 mm
 \varnothing 37x40 mm
 \varnothing 45x90 mm
 \varnothing 50x100 mm
 \varnothing 55x110 mm
 \varnothing 70x90 mm
 \varnothing 75x120 mm
 \varnothing 110x185 mm
 \varnothing 120x210 mm
 \varnothing 150x280 mm

18 POINT

\varnothing 45x75 mm
 \varnothing 75x135 mm
 \varnothing 95x200 mm
 \varnothing 125x300 mm

20 POINT

\varnothing 45x95 mm
 \varnothing 50x65 mm
 \varnothing 60x100 mm
 \varnothing 85x130 mm
 \varnothing 85x145 mm
 \varnothing 100x185 mm

22 POINT

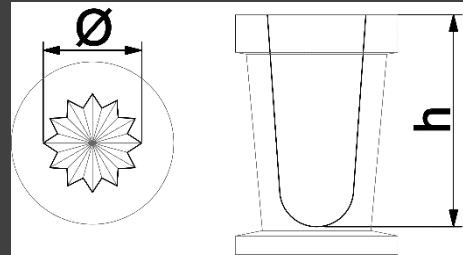
\varnothing 140x260 mm

24 POINT

\varnothing 50x90 mm
 \varnothing 80x150 mm

30 POINT

\varnothing 45x90 mm



PINEAPPLE MOLDS



Internal measurements \varnothing x h indicative

SMALLER (\varnothing 38X58 mm)

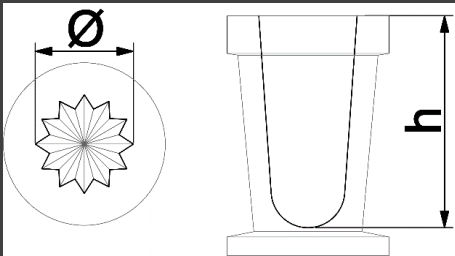
SMALL (\varnothing 52X90 mm)

MEDIUM (\varnothing 60X100 mm)

EXTRA MEDIUM (\varnothing 70X130 mm)

BIG (\varnothing 100x185 mm)

EXTRA BIG (\varnothing 135X220 mm)



LAPWORKING MURRINE MOLDS



ACCESSORIES



COMPASS:

STRAIGHT COMPASS:

XXS	(145 mm)
XS	(165 mm)
S	(180 mm)
M	(235 mm)
L	(285 mm)
XL	(315 mm)
XXL	(400 mm)



BENT:

XXS	(155 mm)
XS	(180 mm)
S	(210 mm)
M	(250 mm)
L	(300 mm)
XL	(400 mm)

PI DIVIDER:

XXS	(110 mm)
XS	(160 mm)
S	(190 mm)
M	(240 mm)
L	(315 mm)



TUNGSTEN STICK

Needles \varnothing 1,6 / 2,0 / 2,4 / 3,2 mm

ROLLER:

MEDIUM
SMALL



HAND TORCHES (customized handle)



FLAMES NUMBER:

- 6
- 9
- 12
- 15
- 19
- 25
- 36
- 64



6 Pistol Flames



64 Flames



Personalized handle



MOLD "FRACCHI":



<p>SKULL: SMALL (22x17 mm) MEDIUM (24x18 mm)</p>	 <p>MOON: SMALL (18 mm) MEDIUM (22 mm)</p>
<p>FACE: SMALLER (18x14 mm) SMALL (22x16 mm) S- MEDIUM (27x19 mm) MEDIUM (33x24 mm) BIG (42x30 mm)</p>	 <p>CHERUB: SMALLER (20x18 mm) SMALL (25x22 mm) S- MEDIUM (30x26 mm) MEDIUM (35x30 mm) BIG (42x36 mm)</p> 
<p>LION classic version 1: SMALLER (20x15 mm) SMALL (25x19 mm) S- MEDIUM (29x23) MEDIUM (35x27) BIG (40x30)</p>	 <p>LION version 2 more rounded: S- MEDIUM (30x25) BIG (40x35)</p>
<p>SHELL: SMALLER (15 mm) SMALL (20 mm) S- MEDIUM (25 mm) MEDIUM (30 mm) BIG (35 mm) EXTRA BIG (43 mm)</p>	<p>STRAWBERRY: SMALLER (10 mm) SMALL (15 mm) MEDIUM (18 mm) BIG (23 mm) EXTRA BIG (27 mm)</p> 
<p>TIGER (40x38 mm)</p> 	<p>BEAR (35X40 mm)</p> 

CORKS FOR SMOOTHING HOT GLASS



CORCKS HIGHEST DENSITY THICKNESS 70 MM:
130X240 MM (couple)

100X200 MM (couple)



MOLDS AND PLATFORM FOR BLOWING



Example of mold: 100 mm diameter sphere
On estimate



Platform for blowing with compressed air mold opening-closing



MANUAL CUTTER FOR GLASS RODS



MANUAL CUTTER FOR GLASS RODS (460 x 260 mm)
WIDIA blade



ROD KNIFE
WIDIA blade